

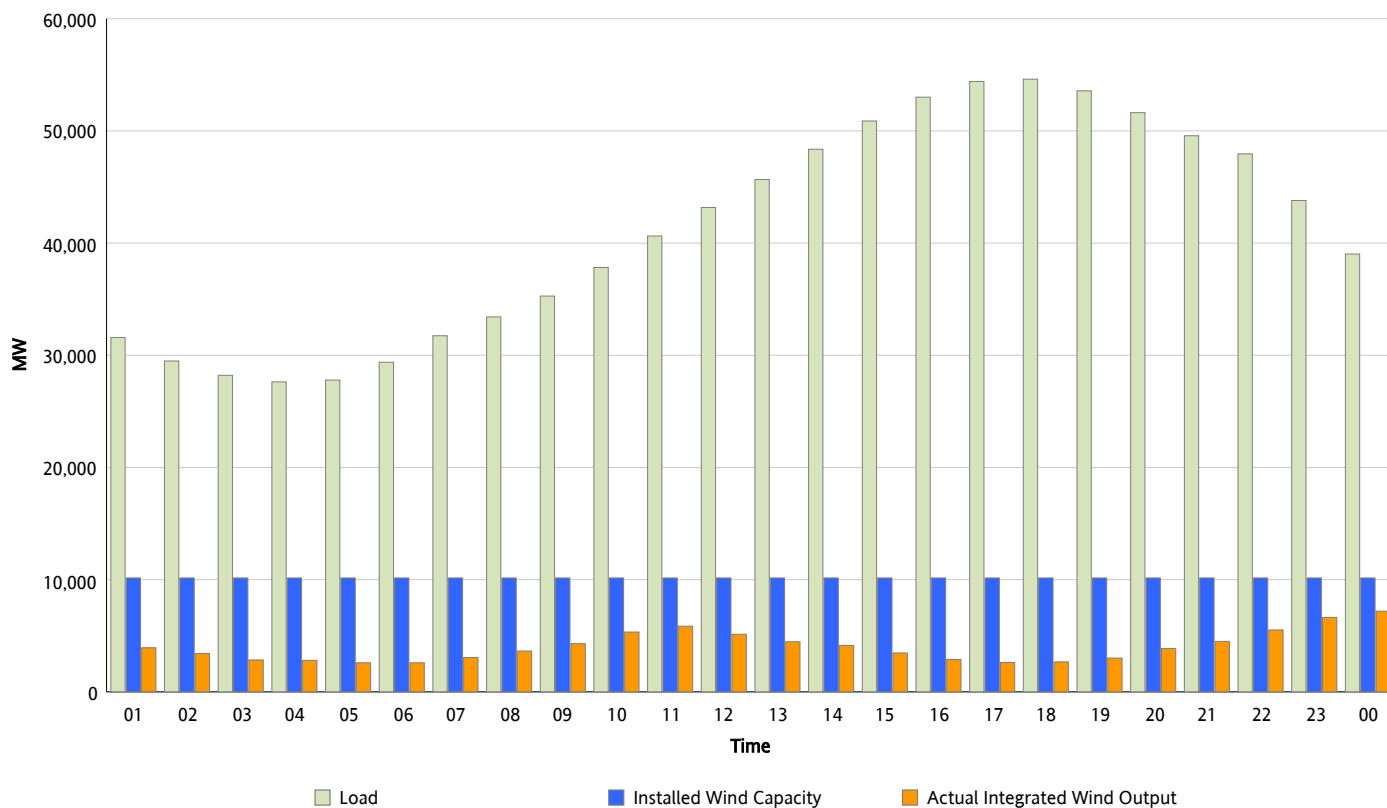


## ERCOT Grid Operations

### Wind Integration Report : 06/03/2013

Peak Load	54,611 MW
Load Peak Hour (HE)	18
Wind Over Peak	2,674 MW
Wind Record 05/02/13	9,674 MW
Max Wind Value*	7,358 MW
Wind Peak Time	23:54
Wind Integration %	19.61 %

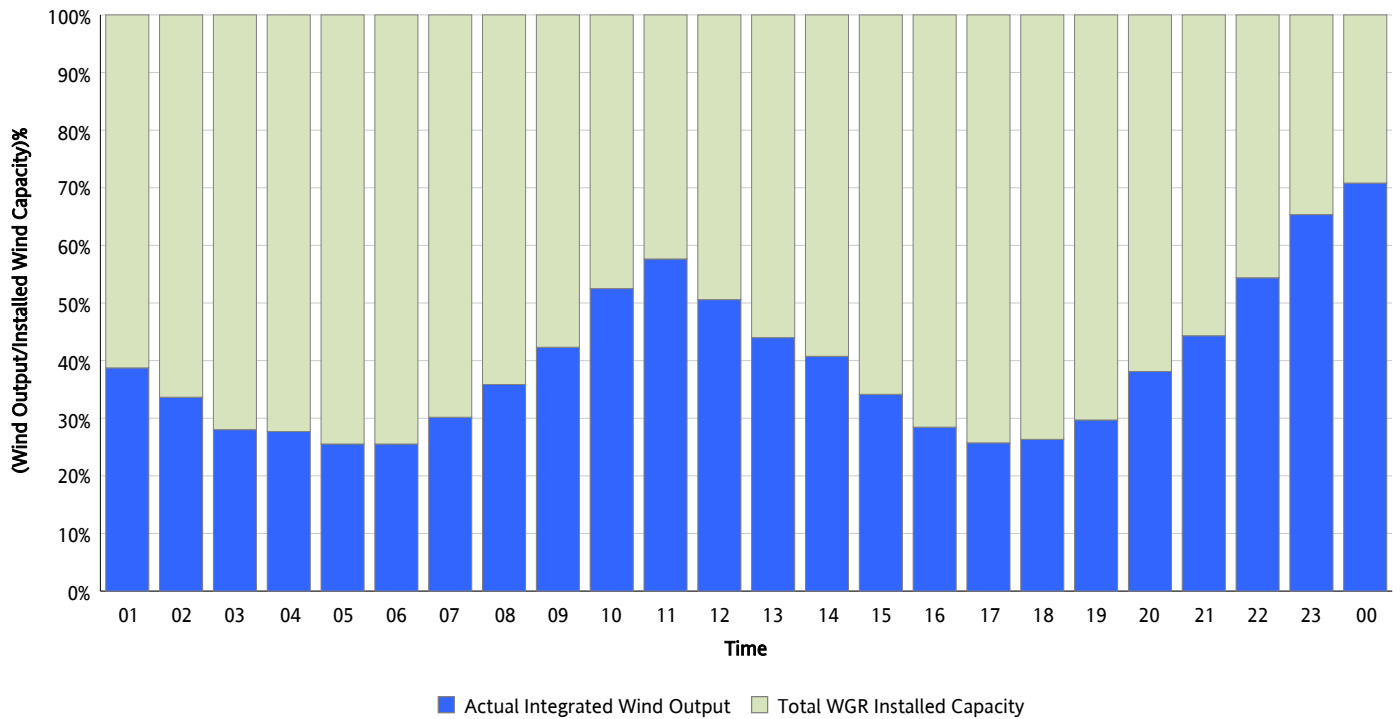
**Hourly Average Actual Load vs. Actual Wind Output**  
**06/03/2013**



\* Wind Record and Wind Max represent instantaneous values and the rest of the values are integrated over the hour

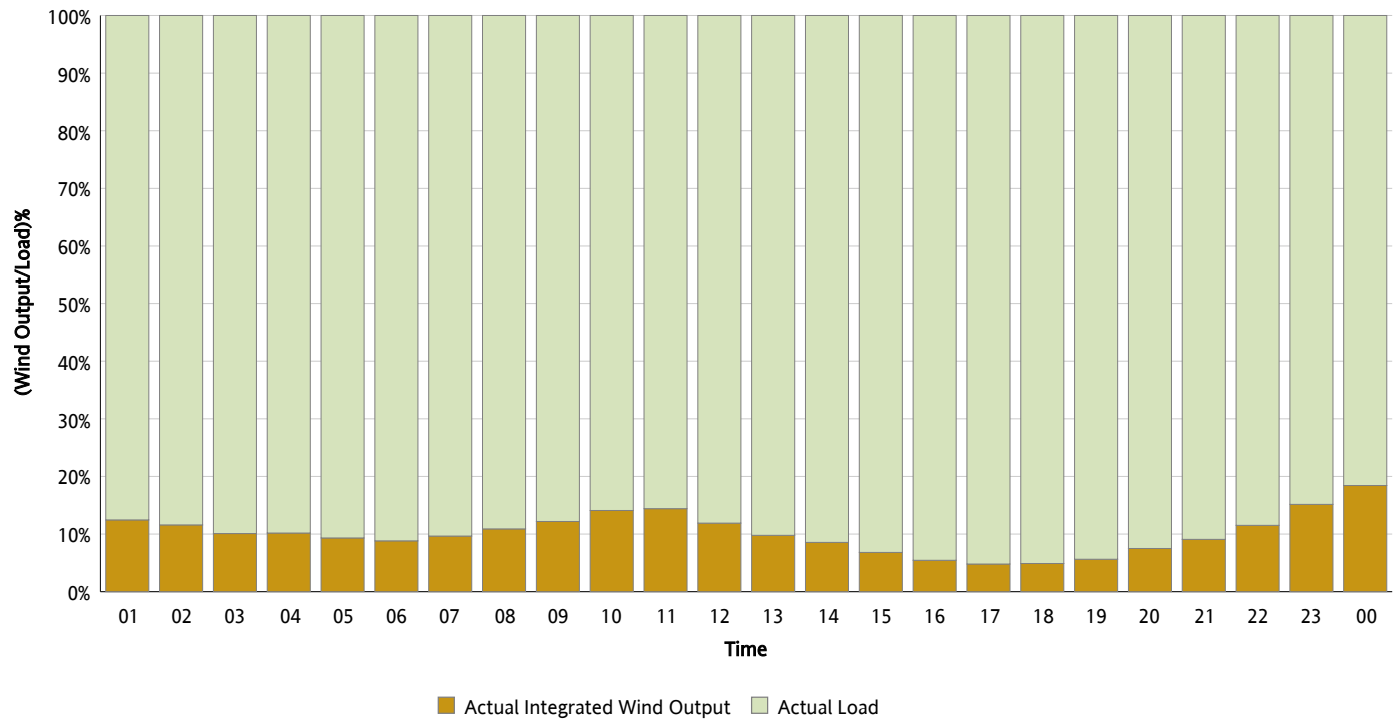
## Actual Wind Output as a Percentage of the Total Installed Wind Capacity

06/03/2013



## Actual Wind Output as a Percentage of the ERCOT Load

06/03/2013



## ERCOT Load vs. Actual Wind Output

05/27/2013 - 06/03/2013

